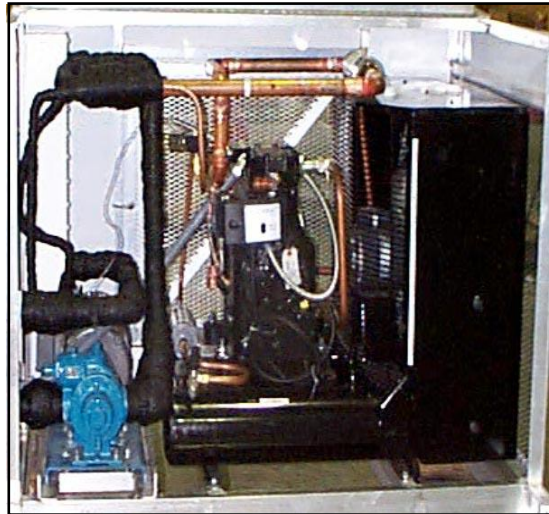


***CARBON DIOXIDE
MODULAR
REFRIGERATION UNITS***



The ideal solution to your vacuum jacketed tank heat input problems. We offer two sizes to meet your requirements.

NOTE: Shown with customer supplied Blackmer CRL- 1.25 pump and optional hinged access door

*Carbon Dioxide Equipment
Call for current prices and availability*



770-267-8821 or Toll Free: 877-267-9821

geninformation@carbotech.com

www.carbotech.com

Monroe, Georgia

MRU TECHNICAL INFORMATION

General Description

Carbo Tech Modular Refrigeration Units consist of a high quality condensing unit coupled to a balanced heat exchanger with a circulation pump. When properly sized and installed they are ideal to remove the heat developed in vacuum jacket tanks. All units utilize R-404A environmentally safe refrigerant and are factory tested for proper operation.

Specifications

1. Copeland semi-hermetic condensing unit.
 2. R-404A environmentally safe refrigerant.
 3. Balanced heat exchanger rated at 450 PSI
 4. Pop type safety relief valve set at 350 PSI
 5. Pressure switch for automatic operation
 6. Cutler Hammer NEMA 3R Control panel with fused disconnect
 7. Blackmer CRL pump. (supplied by others)
 8. Aluminum angle framework, with pre-printed white aluminum cover.
-

Capacities

<i>Model</i>	<i>Based on -15 Degrees F Evaporator and 90 Degrees F Ambient</i>
<i>CT-MRU4</i>	<i>30,000 BTU's per hour</i>
<i>CT-MRU5.5</i>	<i>42,200 BTU's per hour</i>

*Carbon Dioxide Equipment
Call for current prices and availability*



770-267-8821 or 877-267-8821

geninformation@carbotech.com

carbotech.com

Monroe, GA.